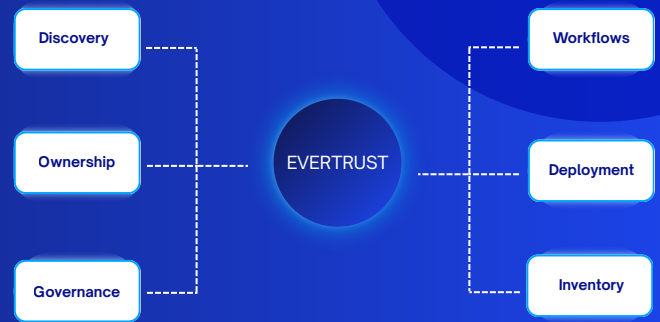


100% sovereign

Automate your entire certificate lifecycle from one portal



The digital trust pain

The exponential **growth in machine identities**, combined with **shorter certificate lifespans** and **stricter security requirements**, has created an impossible management burden for security teams.

95.7%

decrease in certificate lifespan validity since 2015, with TLS/SSL certificates dropping from 3 years to a projected 47 days by 2029 (*)

40,000x

more machine identities than human identities (*)

360%

increase in compliance controls and 233% increase in validation methods since 2011 (*)

Organizations using fragmented tools, manual processes, and CA-specific solutions inevitably experience **costly outages, security gaps, and compliance failures**

(*) Sources : Industry standards bodies including the CA/Browser Forum, NIST, and PCI SSC

Product Overview

EVERTRUST's Certificate Lifecycle Manager is designed to take the complexity and risk out of managing digital certificates across your entire organization.

With automation at every step, EVERTRUST brings simplicity, control, and security to your certificate ecosystem; whether you operate on-premises, in the cloud, or in hybrid environments.

CERTIFICATES MANAGED

30M+

TIME SAVED

300+ hrs/mo

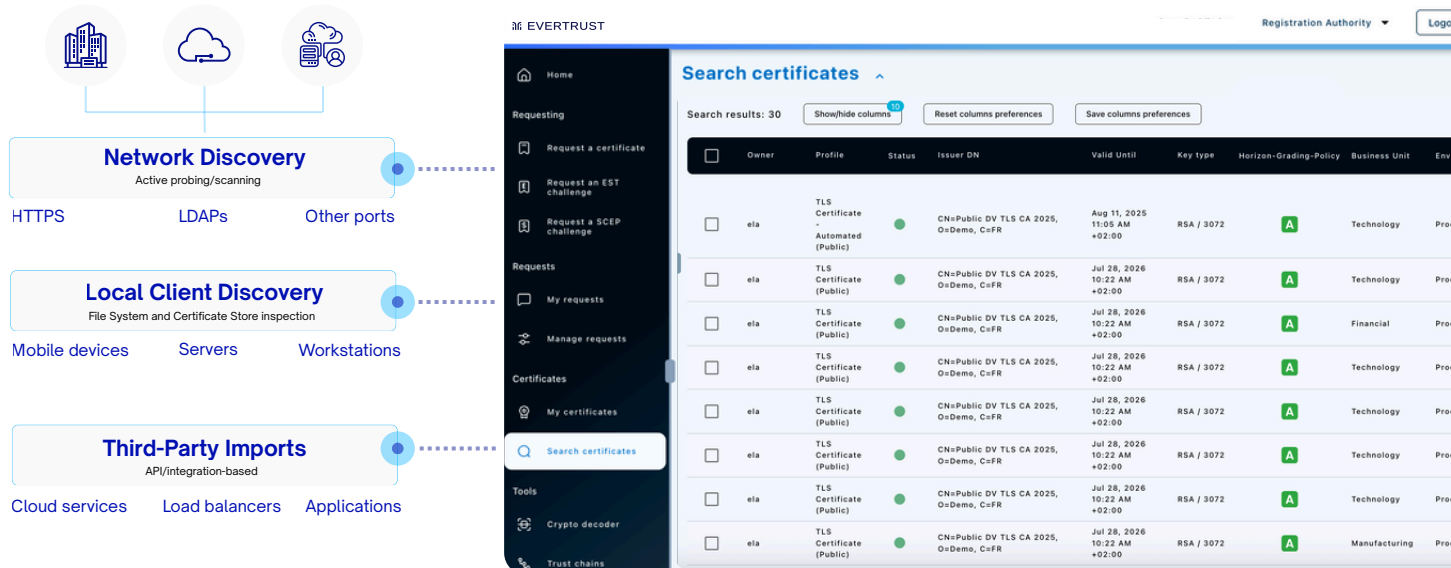
OUTAGE PREVENTION

70-80%

Key capabilities

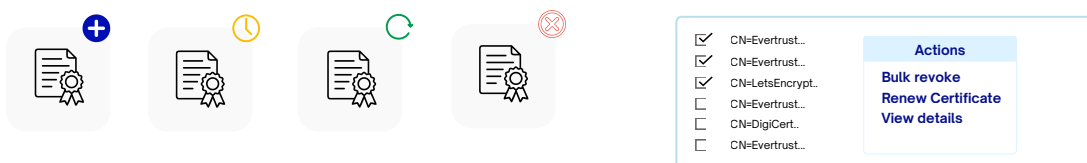
Certificate discovery and inventory

- ✓ Comprehensive discovery across your entire infrastructure with **customizable scanning campaigns** that cover **networks, cloud services, containers, thirdparties** and **endpoints on your schedule**
- ✓ Real-time inventory with **complete lifecycle tracking**, showing when each certificate was discovered, issued, renewed, and by discovery/issuance method
- ✓ Instant identification of risk and compliance issues using **advanced search filters for weak algorithms, cryptography, expiring certificates, unauthorized CAs, and policy violations**
- ✓ Complete operational visibility with **centralized monitoring, ownership accountability, and proactive alerts** before critical certificates expire



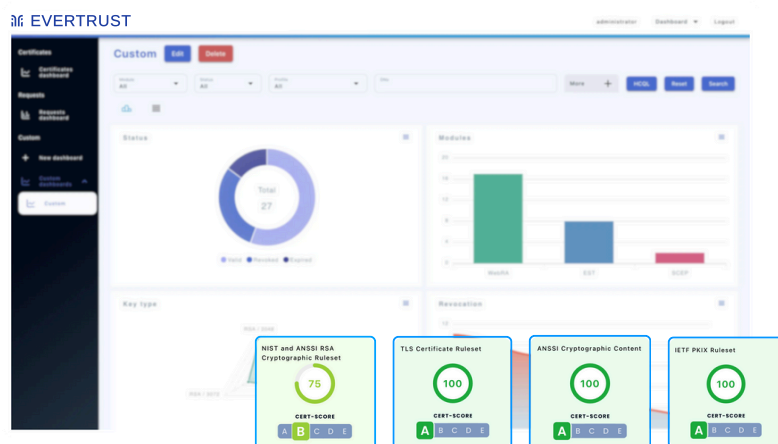
Certificate lifecycle automation

- ✓ Automate end-to-end certificate operations with **customized workflows** that handle issuance, renewal, revocation and deployment with or without manual intervention
- ✓ **Schedule renewals** based on your policies and **automatically redeploy** certificates to endpoints, ensuring continuous protection without service interruptions
- ✓ Manage certificates at scale with **bulk operations** that handle thousands of certificates as easily as one, from mass revocations to policy updates



Policy enforcement and governance

- ✓ **Automatically block non-compliant certificate requests** when they don't meet cryptographic standards, approved CAs, or naming conventions, with clear explanations for quick remediations
- ✓ **Assign certificate ownership** to Business Units, Teams, or Individuals to ensure clear accountability and enable owner-based self-service operations
- ✓ Track all certificate actions with **cryptographically signed audit logs** that prevent tampering and provide forensic-level detail
- ✓ Score certificate quality from A-E grades based on industry standards (NIST, ANSSI, CA/B Forum) to prioritize remediation
- ✓ Automate compliance **reporting with scheduled email delivery** of audit reports and customizable executive dashboards for leadership meetings and trend analysis



Weekly Report



Send alert notifications



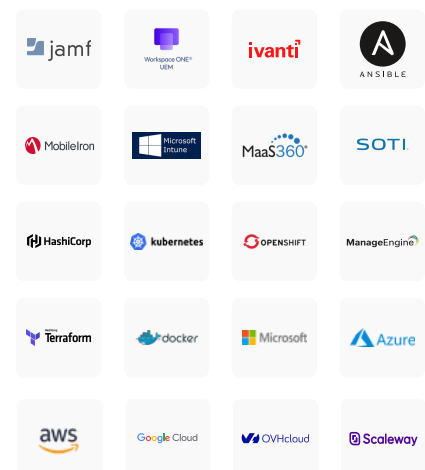
Extend deployment to cloud and DevOps

- ✓ **Enable developers to automatically provision certificates, sign code and containers, and manage machine identities without leaving their CI/CD environment**

Seamlessly integrate through Ansible collections, Terraform providers, and Cert-manager issuers for Kubernetes and OpenShift, plus native support for **any MIM platforms** including Workspace One, Microsoft Intune, and Jamf.

- ✓ **Deploy certificates automatically to applications and infrastructure across your entire technology stack**

Push certificates directly to LDAP directories, database servers, web servers, and middleware using native connectors and REST APIs, with built-in support for AWS Certificate Manager, Azure Key Vault, Google Certificate Manager, F5 BIG-IP, and any cloud service that accepts certificate imports.



The time we spend managing certificates has decreased by 85%. Now our security team can focus on more strategic initiatives instead of routine certificate tasks.

Security Officer at a leading Aerospace Group

Built by security teams for security teams

Why organisations choose EVERTRUST

European digital sovereignty

100% European company with R&D located in France, giving you complete control over your digital trust infrastructure and independence from foreign technology governance.

Natively integrated with European and International ecosystems including HSMs and eIDAS standards.

Move to Cloud-Ready

Your digital transformation doesn't have to mean certificate chaos.

Manage both legacy on-premises and modern cloud certificates through one console, eliminating blind spots during your transition and ensuring consistent security as you evolve.

One console for complete certificate control

Our single pane of glass approach with an intuitive UI simplifies certificate management across complex environments, enabling faster response to security incidents and certificate issues.

Ergonomic & user friendly

Built with REST APIs as a first-class citizen and leveraging open protocols, Evertrust integrates easily and seamlessly with your existing ecosystems without proprietary constraints.

Reduced IT footprint

Non-intrusive in your environment and compatible with complex infrastructure, Evertrust minimizes deployment complexity and ongoing maintenance requirements.

ABOUT

EVERTRUST is a European software company providing high-performance tools covering the complete certificate lifecycle, from automated public and private certificate management to private Certificate Authorities, OCSP validation, and timestamping services.

As an ISO 27001 certified member of Hexatrust and PKI Consortium, EVERTRUST helps global enterprises and public organizations easily manage their digital trust infrastructure while staying compliant and sovereign.